

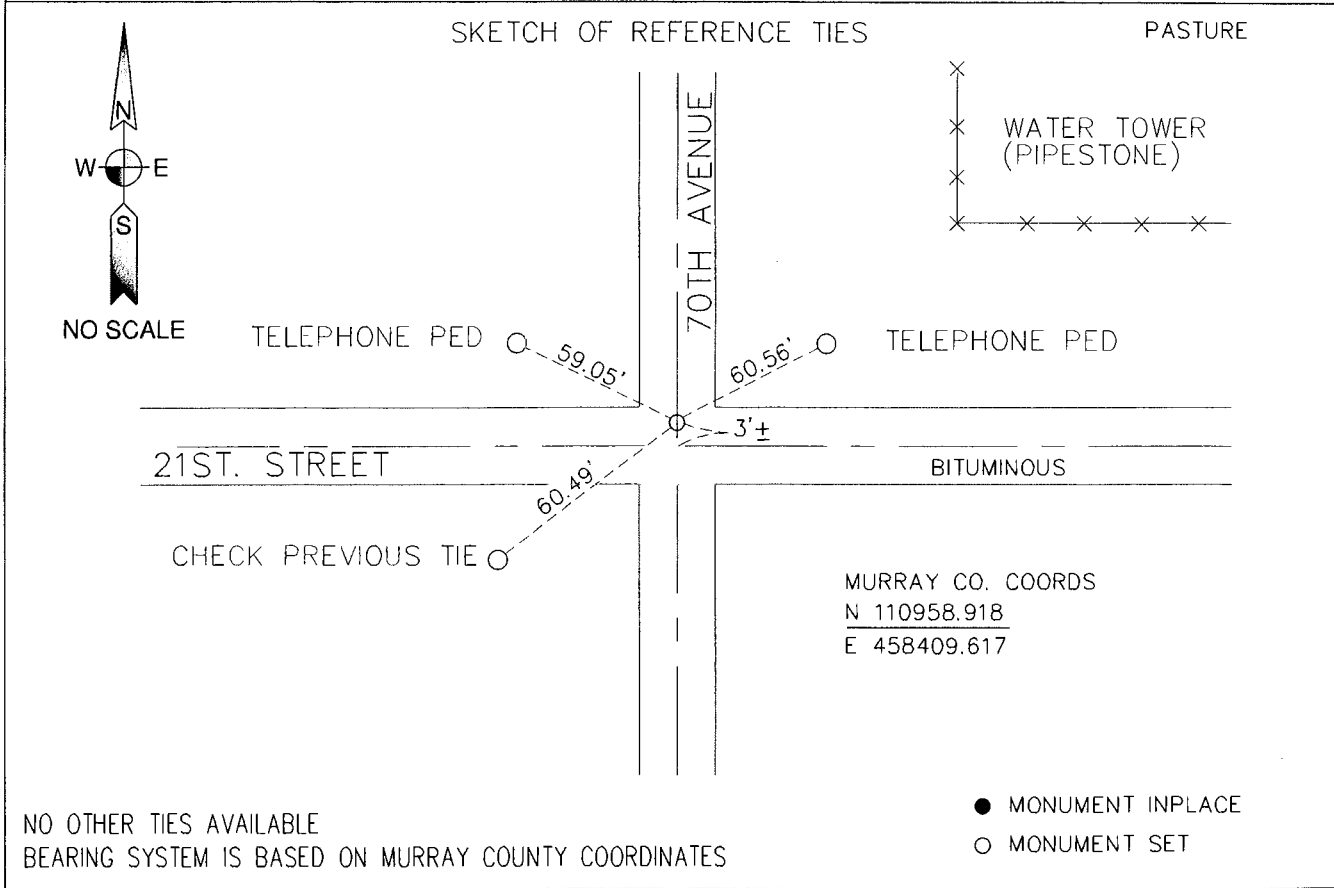
# CERTIFICATE OF LOCATION OF GOVERNMENT CORNER

NORTHEAST Corner of Section 30, Township 105N, Range 42W, 5th P.M.

STATE OF MINNESOTA, County of MURRAY

At the corner location shown on the sketch:

- On \_\_\_\_\_ found a \_\_\_\_\_  
DATE
- left monument as found,       lowered monument,       removed monument (explain)
- On 3-5-08 placed a MAG NAIL 3' NORTH OF E-W CENTERLINE  
DATE OF 21ST STREET



Statement of evidence relative to this corner location is on back of page.

I hereby certify that this document and the data contained herein was prepared by me or under my direct supervision.

[Signature]      3-17-08  
SURVEYOR'S NAME      DATE

Registration No. 40827

Land Surveyor,       Professional Engineer

County Surveyor,       County Engineer

OFFICE OF THE COUNTY RECORDER  
County of MURRAY

I hereby certify that this document was filed in the Co. Recorders office at \_\_\_\_\_ .M. on the \_\_\_\_\_ day of \_\_\_\_\_ A.D., 20\_\_\_\_

County Recorder [Signature]

By \_\_\_\_\_, Deputy

DOCUMENT NO. MAR 18 2008

STATEMENT OF EVIDENCE:

\_\_\_\_NORTHEAST\_\_\_\_ CORNER, SECTION 30, T. 105 N., R. 42 W.,  
\_\_\_\_MURRAY\_\_\_\_ COUNTY, MINNESOTA

- 1861 D.W. Wellman & S.S. Smoot, U.S. Deputy Surveyors, monumented corner.
- 2008 Ulteig Engineers, Inc., Survey Crew, Bob Kohler Party Chief, placed PK-nail 3' north of E-W centerline.  
Ties: NW-59.05' to an existing telephone pedestal;  
SW-60.49' to a found nail and bottle cap in power pole;  
NE-60.56' to a telephone pedestal.